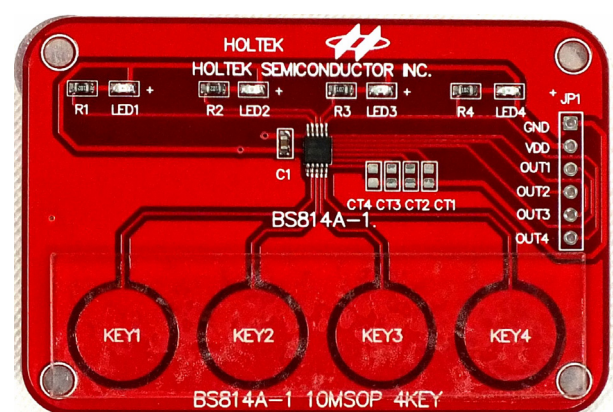


# Standard 4-Touch Keys

## BS814A-1

### Characteristics

- Touch Keys : BS814A-1 10-pin MSOP
- Operating voltage : 2.2V ~ 5.5V
- Low standby current
- Auto-calibration
- Reliable touch detections
- High power supply rejection
- Standby and normal operating power modes
- Maximum key on duration time detection
- Power supply voltage drop rejection function
- 4 touch inputs
- 4 Output - NMOS with internal pull-highs
- Level Hold, low active
- Sensitivity adjustment using an external capacitor
- Minimal number of external components



## Applications

Consumer Products, Home Appliances, Industrial Control, Health Care Products, etc.

## Application Circuit

