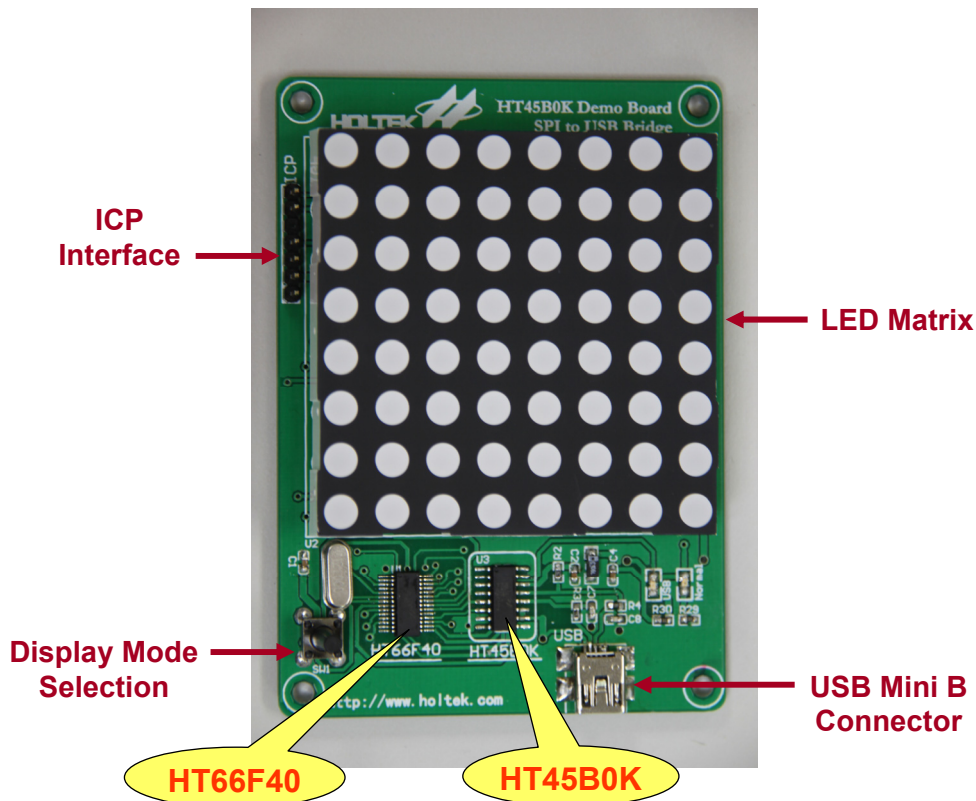


Data Transfer SPI to USB Bridge

HT45B0K + HT66F40

Characteristics

- The HT45B0K is an SPI to USB Bridge IC
- The HT66F40 Communicates Via its SPI Interface to the SPI / USB Bridge and Drives the LED Matrix
- The USB Power Supply can be Used for all Circuits
- Display Mode Selection : 1. Auto Display 2. AP Control



Application Areas

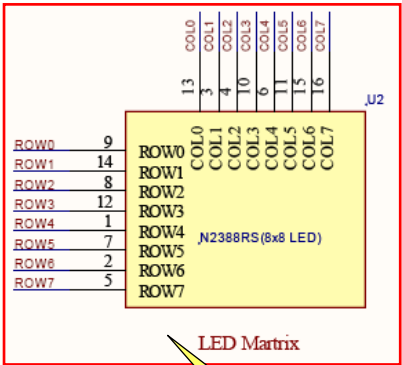
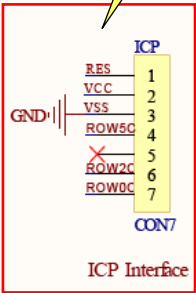
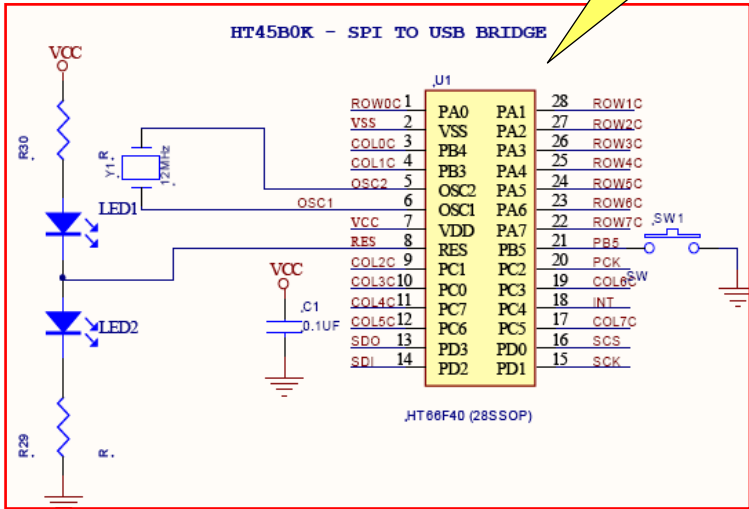


Consumer Products
e.g. Health Care Products, Temperature Monitors, etc.

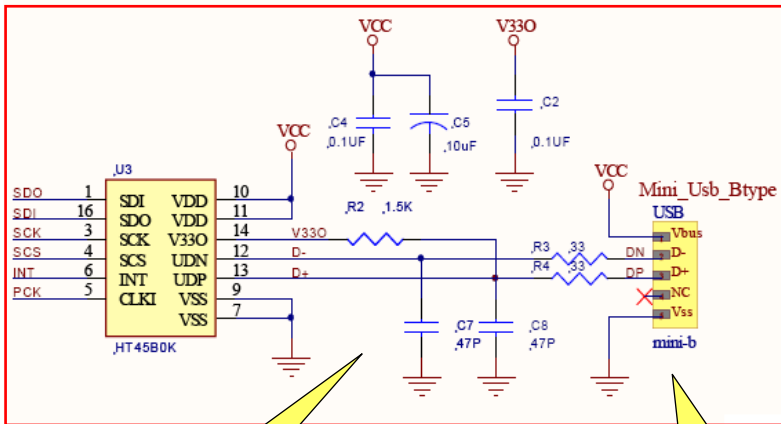
Application Circuit

**HT66F40
Circuit**

**ICP
Interface**

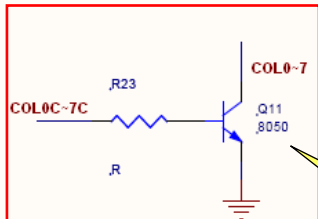


**LED
Matrix**

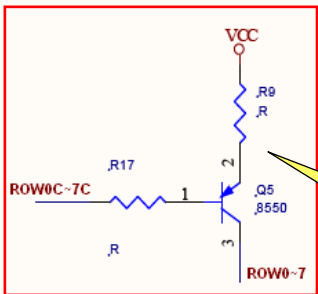


**HT45B0K &
USB Circuit**

**USB Mini B
Connector**



**Transistor
COL0-7**



**Transistor
ROW0-7**